



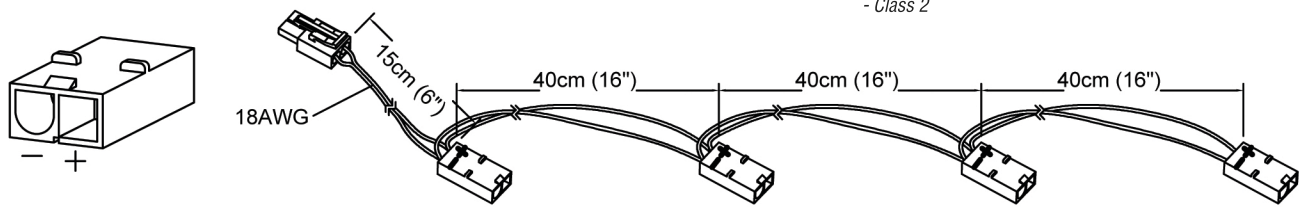
DLST-99-WH



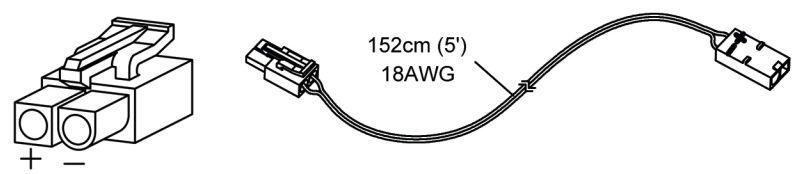
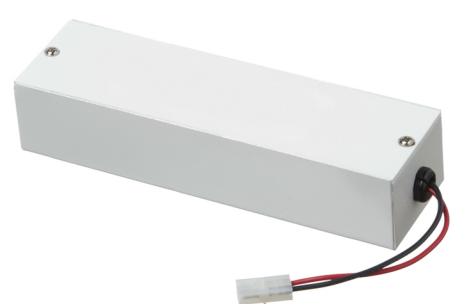
DLST-99-SC



DMPI60- 12V 60W electronic plug-in transformer
with in-line switch
- 12" cord terminated with female connector
- Class 2



DLST42- 18 AWG wire harness allowing 4 light connections
- Maximum length 137cm (54"), distance between connectors 40cm (16")
- Please note polarity on each connector
- Designed for use in Class II installation only



DLST42-5 - 18 AWG wire extension 152cm (5') complete with one male and one female connector
- Please note polarity on each connector
- Designed for use in Class II installation only

DMTR60-43 - 12V 60 VA c/w One Lead
DMTR80-43 - 12V 80 VA c/w Two Leads
DMTR150-43 - 12V 150 VA c/w Three Leads
BUILT TO CLASS 2 SPECIFICATIONS:
DIRECT WIRE TYPE
Includes Transformer Case, Transformer,
Wiring Harness and Hook-up Connectors
Dimensions: 2.38" W x 8.5"L x 2"H

Item No.	Dimensions	No. of Bulbs	Bulb Type	Max. Wattage
DLST-99-SC	1"H x 2.5"W x 2.5"D - 1 lbs.	1	Xenon Bi-pin	10W
DLST-99-WH	1"H x 2.5"W x 2.5"D - 1 lbs.	1	Xenon Bi-pin	10W

